

Couplings and Fittings



NLB can supply hose connections for virtually any water jet connection — **couplings** for up to 20,000 psi (1,400 bar) and **fittings** for ultra-high pressure, up to

40,000 psi (2,800 bar). Couplings are available in quick-disconnect (sleeve-lock) and wing union (hammer-lock) styles, with economical o-rings for field repair.

Couplings-10,000 to 15,000 psi (700 to 1,400 bar)

QUICK-COUPPLINGS

NLB offers a variety of couplings in quick-disconnect (sleeve-lock) and two screw-lock, or wing union, styles. Inexpensive o-rings are available for repairing all NLB Couplings.

The new NLB NQC-15 provides the ease of a quick-disconnect fitting for operating pressures of up to 15,000 psi (1,035 bar). This high-quality fitting has 1/2" female NPT threads on each end for the hose connection.



NQC-11



NSC-4

Part No.	Style	Pressure	Thread
NQC-11	Quick-Connect	10,000 psi (700 bar)	3/8" FNPT
NQC-22	Quick-Connect	10,000 psi (700 bar)	1/2" FNPT
NSC-4	Screw	15,000 psi (1,035 bar)	1/2" FNPT
NQC-15	Quick-Connect	15,000 psi (1,035 bar)	1/2" FNPT

Coupling Shields

NLB high-pressure coupling shields provide a secondary means of protection in the event of coupling release. Hoses stay in place while high-pressure water is deflected.



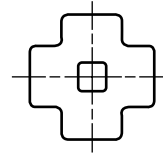
CS-22

Part No.	Max. Pressure
CS-22	10,000 psi (700 bar)

10,000 psi (700 bar)

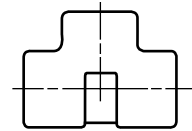
Crosses — Pipe Thread (NPT)

Part No.	Connection Type	Max. Pressure	
		psi	bar
04-CRS-10T-S	1/2" NPTF	10,000	700
06-CRS-6T-S	3/4" NPTF	10,000	700
10-CRS-6T-S	1" NPTF	10,000	700



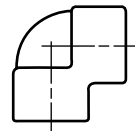
Tees — Pipe Thread (NPT)

Part No.	Connection Type	Max. Pressure	
		psi	bar
03-TEE-6T-S	3/8" NPTF	10,000	700
04-TEE-6T-S	1/2" NPTF	10,000	700
06-TEE-6T-S	3/4" NPTF	10,000	700
10-TEE-6T-S	1" NPTF	10,000	700



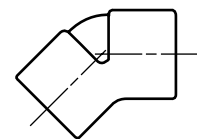
90° Elbows — Pipe Thread (NPT)

Part No.	Connection Type	Max. Pressure	
		psi	bar
01-ELB-90-6T-S	1/8" NPTF	10,000	700
02-ELB-90-6T-S	1/4" NPTF	10,000	700
03-ELB-90-6T-S	3/8" NPTF	10,000	700
04-ELB-90-6T-S	1/2" NPTF	10,000	700
06-ELB-90-6T-S	3/4" NPTF	10,000	700
10-ELB-90-10T-S	1" NPTF	10,000	700



45° Elbows — Pipe Thread (NPT)

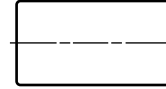
Part No.	Connection Type	Max. Pressure	
		psi	bar
03-ELB-45	3/8" NPTF	10,000	700
04-ELB-45-6T-S	1/2" NPTF	10,000	700
06-ELB-45-6T-S	3/4" NPTF	10,000	700
10-ELB-45-6T-S	1" NPTF	10,000	700



Couplings and Fittings

Couplings — Pipe Thread (NPT)

Part No.	Connection Types		Max. Pressure	
	Connection 1	Connection 2	psi	bar
03-02-RC-10T-S	3/8" NPTF	1/4" NPTF	10,000	700
04-03-RC-6T-S	1/2" NPTF	3/8" NPTF	10,000	700
06-04-RC-6T-S	3/4" NPTF	1/2" NPTF	10,000	700
10-04-RC-6T-SS	1" NPTF	1/2" NPTF	10,000	700
10-06-RC-6T-S	1" NPTF	3/4" NPTF	10,000	700



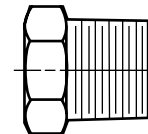
Wing Unions — Pipe Thread (NPT)

Part No.	Connection Type	Max. Pressure	
		psi	bar
PP17518	1/2" NPTF	10,000	700
WU-1002-06	3/4" NPTF	10,000	700
WU-1002-1	1" NPTF	10,000	700
WU-1002-2	2" NPTF	10,000	700
WU-1002-2.5	2-1/2" NPTF	10,000	700



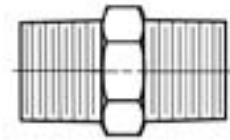
Reducing Bushing — Pipe Thread (NPT)

Part No.	Connection Types		Max. Pressure	
	Connection 1	Connection 2	psi	bar
02-01-RB-6T-S	1/4" NPTM	1/8" NPTF	10,000	700
03-01-RB-6T-S	3/8" NPTM	1/8" NPTF	10,000	700
03-02-RB-6T-S	3/8" NPTM	1/4" NPTF	10,000	700
04-01-RB-6T-S	1/2" NPTM	1/8" NPTF	10,000	700
04-02-RB-6T-S	1/2" NPTM	1/4" NPTF	10,000	700
04-03-RB-6T-S	1/2" NPTM	3/8" NPTF	10,000	700
06-01-RB-6T-S	3/4" NPTM	1/8" NPTF	10,000	700
06-02-RB-6T-S	3/4" NPTM	1/4" NPTF	10,000	700
06-03-RB-6T-S	3/4" NPTM	3/8" NPTF	10,000	700
06-04-RB-6T-S	3/4" NPTM	1/2" NPTF	10,000	700
10-04-RB-6T-S	1" NPTM	1/2" NPTF	10,000	700
10-06-RB-6T-S	1" NPTM	3/4" NPTF	10,000	700
12-10-RB-6T-S	1-1/4" NPTM	1" NPTF	10,000	700
14-10-RB-6T-S	1-1/2" NPTM	1" NPTF	10,000	700
20-10-RB-6T-S	2" NPTM	1" NPTF	10,000	700
20-14-RB-6T-S	2" NPTM	1-1/2" NPTF	10,000	700



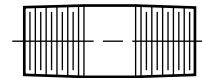
Hex Nipples — Pipe Thread (NPT)

Part No.	Connection Types		Max. Pressure	
	Connection 1	Connection 2	psi	bar
PM21837	3/8" NPTM	1/4" NPTM	10,000	700
PM21838	3/4" NPTM	1/2" NPTM	10,000	700
PM3487	3/4" NPTM	3/4" NPTM	10,000	700
PM21840	1" NPTM	1/2" NPTM	10,000	700
PM21841	1" NPTM	3/8" NPTM	10,000	700
PM23139 or PM21839	1" NPTM	3/4" NPTM	10,000	700
PM3485	1-1/4" NPTM	1-1/4" NPTM	10,000	700



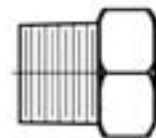
Nipples — Pipe Thread (NPT)

Part No. specify length (in inches) inplace of "XX"	Connection Types	Max. Pressure	
		psi	bar
01-XX-160-S	1/8" NPTM	10,000	700
02-XX-160-S	1/4" NPTM	10,000	700
03-XX-160-S	3/8" NPTM	10,000	700
04-XX-160-S	1/2" NPTM	10,000	700
06-XX-160-S	3/4" NPTM	10,000	700
10-XX-160-S	1" NPTM	10,000	700



Square Plugs — Pipe Thread (NPT)

Part No.	Connection Type	Max. Pressure	
		psi	bar
01-PLG-6T-S	1/8" NPTM	10,000	700
02-PLG-6T-S	1/4" NPTM	10,000	700
03-PLG-6T-S	3/8" NPTM	10,000	700
04-PLG-6T-S	1/2" NPTM	10,000	700
06-PLG-6T-S	3/4" NPTM	10,000	700
10-PLG-6T-S	1" NPTM	10,000	700
12-PLG-6T-S	1-1/4" NPTM	10,000	700
14-PLG-6T-S	1-1/2" NPTM	10,000	700
20-PLG-6T-S	2" NPTM	10,000	700



Couplings and Fittings

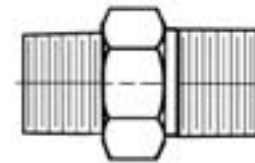
Plugs — Socket Head

Part No.	Connection Type	Max. Pressure	
		psi	bar
02-PLG-4H-10T-S	1/4" NPTM	10,000	700
04-PLG-6T-316	1/2" NPTM	10,000	700



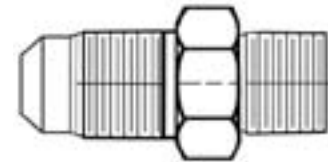
Pipe Thread Male (NPTM) To Type M Male Adapters

Part No.	Connection Type		Max. Pressure	
	Connection 1 (C1)	Connection 2 (C2)	psi	bar
PM18386	1/4" NPTM	9/16" Type M Male	10,000	700
DM6023-354	1/4" NPTM	3/4"-16 Type M Male	10,000	700
PM17745	3/8" NPTM	9/16" Type M Male	10,000	700
DM6023-350	3/8" NPTM	3/4" Type M Male	10,000	700
PM15288	1/2" NPTM	9/16" Type M Male	10,000	700
PM20196	1/2" NPTM	3/4" Type M Male	10,000	700
PM17247	1/2" NPTM	3/4"-16 Type M Male	10,000	700
DM6023-174	1/2" NPTM	1" Type M Male	10,000	700
DM6023-351	3/4" NPTM	3/4" Type M Male	10,000	700
PM7698	3/4" NPTM	1" Type M Male	10,000	700
DM6023-165	1" NPTM	1" Type M Male	10,000	700
DM6023-171	1" NPTM	1-5/16" Type M Male	10,000	700



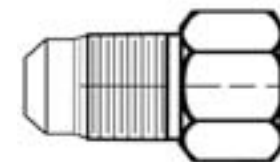
Pipe Thread Male (NPTM) To Medium Pressure Male Adapters

Part No.	Connection Type		Max. Pressure	
	Connection 1 (C1)	Connection 2 (C2)	psi	bar
PP20569	1/2" NPTM	3/4" MP Male	10,000	700
PM17160	1/2" NPTM	1" MP Male	10,000	700
DM6023-339	3/4" NPTM	1" MP Male	10,000	700
CM30756	1" NPTM	1" MP Male	10,000	700



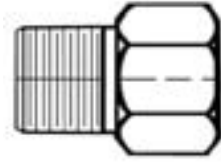
Pipe Thread Female (NPTF) To Medium Pressure Male Adapters

Part No.	Connection Type		Max. Pressure	
	Connection 1 (C1)	Connection 2 (C2)	psi	bar
DM6023-181	1/4" NPTF	9/16" MP Male	10,000	700
PM18422	3/8" NPTF	9/16" MP Male	10,000	700
DM6023-130	1/2" NPTF	9/16" MP Male	10,000	700
DM6023-131	1/2" NPTF	3/4" MP Male	10,000	700
PM3549	1/2" NPTF	1" MP Male	10,000	700
CM24608	1/2" NPTF	1" MP Male	10,000	700
DM6023-169	3/4" NPTF	3/4" MP Male	10,000	700
CM12839	3/4" NPTF	1" MP Male	10,000	700
6023-162	1" NPTF	3/4" MP Male	10,000	700
PM17620	1" NPTF	1" MP Male	10,000	700
CM22205	1" NPTF	1-3/8" MP Male	10,000	700



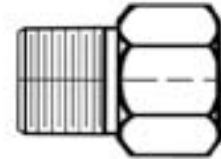
Pipe Thread Male (NPTM) To Medium Pressure Female Adapters

Part No.	Connection Type		Max. Pressure	
	Connection 1 (C1)	Connection 2 (C2)	psi	bar
DM6023-180	1/4" NPTM	3/8" MP Female	10,000	700
PM18339	3/8" NPTM	9/16" MP Female	10,000	700
DM6023-134	1/2" NPTM	9/16" MP Female	10,000	700
DM6023-155	3/4" NPTM	3/4" MP Female	10,000	700
DM6023-166	1" NPTM	9/16" MP Female	10,000	700



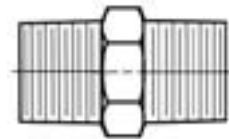
Pipe Thread Female (NPTF) To British Standard Pipe (BSP) Male Adapters

Part No.	Connection Type		Max. Pressure	
	Connection 1 (C1)	Connection 2 (C2)	psi	bar
BJ2909-M09	1/2" NPTF	G1/2" BSP Male	10,000	700
BJ2909-M10	3/4" NPTF	G3/4" BSP Male	10,000	700



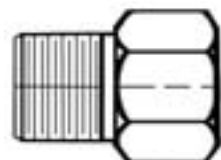
Pipe Thread Male (NPTM) To Metric Male Adapters

Part No.	Connection Type		Max. Pressure	
	Connection 1 (C1)	Connection 2 (C2)	psi	bar
CA3407-5	1/2" NPTM	M22 x 1.5 Male	10,000	700
CA3407-2	1/2" NPTM	M24 x 1.5 Male	10,000	700
CA3407-7	3/4" NPTM	M24 x 1.5 Male	10,000	700
CA3407-4	1" NPTM	M22 x 1.5 Male	10,000	700
CA3407-1	1" NPTM	M24 x 1.5 Male	10,000	700



Pipe Thread Female (NPTF) To Metric Male Adapters

Part No.	Connection Type		Max. Pressure	
	Connection 1 (C1)	Connection 2 (C2)	psi	bar
PM24744	1/2" NPTF	M22 x 1.5 Male	10,000	700
CA3407-8	1/2" NPTF	M24 x 1.5 Male	10,000	700



Couplings and Fittings

20,000 psi (1,400 bar)

Quick Couplings

NLB quick-couplings provide solid connections, yet can be easily disconnected. Inexpensive o-rings are available for each model.

MALE



Part No.	Thread Connection
DM6023-112	1"-12 Male
DM6023-152	3/4"-16 Male
DM6023-114	9/16" MP Male
DM6023-128	3/4" MP Female
DM6023-124	9/16" MP Female

FEMALE



Part No.	Thread Connection
DM6023-115	1"-12 Male
DM6023-138	3/4"-16 Male
6023-125	9/16" MP Female
DM6023-127	3/4" MP Female

20K Coupling Shields

NLB high-pressure coupling shields provide a secondary means of protection in the event of coupling release. Hoses stay in place while high-pressure water is deflected.

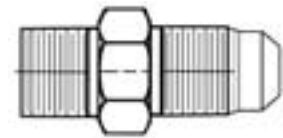


CS20-22

Part No.	Max. Pressure
CS20-22	20,000 psi (1,400 bar)

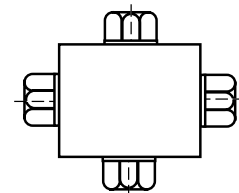
Type M Male To Medium Pressure Male Connectors

Part No.	Connection Type		Max. Pressure	
	Connection 1 (C1)	Connection 2 (C2)	psi	bar
DM6023-242	9/16" Type M Male	3/8" MP Male	20,000	1,400
DM6023-241	9/16" Type M Male	9/16" MP Male	20,000	1,400
DM6023-246	1" Type M Male	3/8" MP Male	20,000	1,400



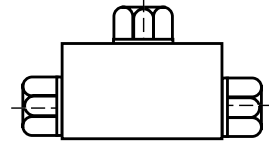
Medium Pressure Crosses

Part No.	Connection Type	Max. Pressure	
		psi	bar
DM6023-83	1/4" MP Female	20,000	1,400
DM6023-365	3/8" MP Female	20,000	1,400
DM6023-63	9/16" MP Female	20,000	1,400
DM6023-68	3/4" MP Female	20,000	1,400
DM6023-73	1" MP Female	20,000	1,400



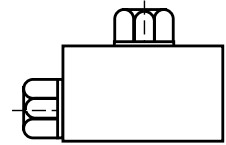
Medium Pressure Tees

Part No.	Connection Type	Max. Pressure	
		psi	bar
DM6023-82	1/4" MP Female	20,000	1,400
DM6023-72	9/16" MP Female	20,000	1,400
DM6023-67	3/4" MP Female	20,000	1,400
DM6023-62	1" MP Female	20,000	1,400



Medium Pressure Elbows

Part No.	Connection Type	Max. Pressure	
		psi	bar
DM6023-81	1/4" MP Female	20,000	1,400
DM6023-71	9/16" MP Female	20,000	1,400
DM6023-66	3/4" MP Female	20,000	1,400
DM6023-61	1" MP Female	20,000	1,400



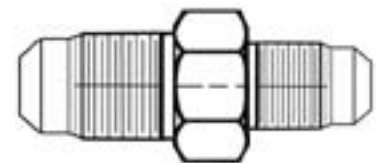
Medium Pressure Straight Couplings

Part No.	Connection Type		Max. Pressure	
	Connection 1 (C1)	Connection 2 (C2)	psi	bar
DM6023-790	3/8" MP Female	3/8" MP Female	20,000	1,400
DM6023-132	9/16" MP Female	1/4" MP Female	20,000	1,400
DM6023-103	9/16" MP Female	3/8" MP Female	20,000	1,400
DM6023-74	9/16" MP Female	9/16" MP Female	20,000	1,400
DM6023-101	3/4" MP Female	3/8" MP Female	20,000	1,400
DM6023-104	3/4" MP Female	9/16" MP Female	20,000	1,400
DM6023-159	3/4" MP Female	3/4" MP Female	20,000	1,400
PP19867	1" MP Female	9/16" MP Female	20,000	1,400
DM6023-158	1" MP Female	3/4" MP Female	20,000	1,400
DM6023-64	1" MP Female	1" MP Female	20,000	1,400



Medium Pressure Male Connectors

Part No.	Connection Type		Max. Pressure	
	Connection 1 (C1)	Connection 2 (C2)	psi	bar
DM6023-167V	9/16" MP Male	1/4" MP Male	20,000	1,400
PM10052	9/16" MP Male	9/16" MP Male	20,000	1,400
DM6023-102	3/4" MP Male	1/4" MP Male	20,000	1,400
DM6023-101	3/4" MP Male	3/8" MP Male	20,000	1,400
CM9596	3/4" MP Male	9/16" MP Male	20,000	1,400
PM17225	3/4" MP Male	3/4" MP Male	20,000	1,400
DM6023-244	1" MP Male	9/16" MP Male	20,000	1,400

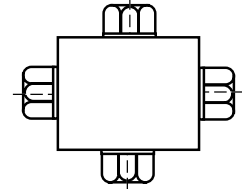


Couplings and Fittings

40,000 psi (2,800 bar)

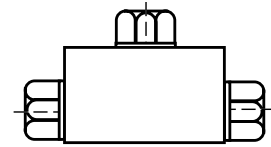
Ultra-High Pressure Crosses

Part No.	Connection Type	Max. Pressure	
		psi	bar
DM6023-203	1/4" HP Female	40,000	2,800
DM6023-204	3/8" HP Female	40,000	2,800
DM6023-205	9/16" HP Female	40,000	2,800



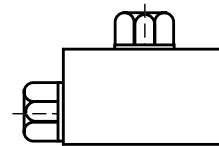
Ultra-High Pressure Tees

Part No.	Connection Type	Max. Pressure	
		psi	bar
DM6023-200	1/4" HP Female	40,000	2,800
DM6023-201	3/8" HP Female	40,000	2,800
DM6023-253	9/16" HP Female	40,000	2,800



Ultra-High Pressure Elbows

Part No.	Connection Type	Max. Pressure	
		psi	bar
DM6023-200	1/4" HP Female	40,000	2,800
DM6023-201	3/8" HP Female	40,000	2,800
DM6023-253	9/16" HP Female	40,000	2,800



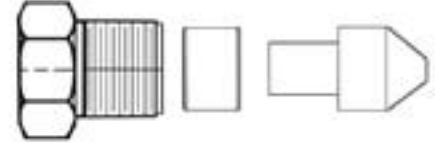
Ultra-High Pressure Straight Couplings

Part No.	Connection Type		Max. Pressure	
	Connection 1	Connection 2	psi	bar
DM6023-218	1/4" HP Female	1/4" HP Female	40,000	2,800
DM6023-315	1/4" HP Female	3/8" HP Female	40,000	2,800
DM6023-317	1/4" HP Female	9/16" HP Female	40,000	2,800
DM6023-219	3/8" HP Female	3/8" HP Female	40,000	2,800
DM6023-108	3/8" HP Female	9/16" HP Female	40,000	2,800
DM6023-220	9/16" HP Female	9/16" HP Female	40,000	2,800



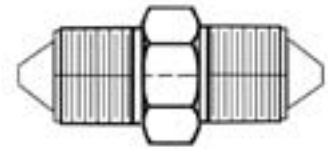
Ultra-High Pressure Gland Nuts, Collars and Plugs

Size	Gland	Collar	Plug
1/4"	DM6023-209	DM6023-212	DM6023-215
3/8"	DM6023-210	DM6023-213	DM6023-216
9/16"	DM6023-211	DM6023-214	DM6023-217



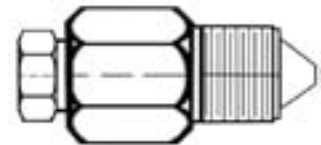
Ultra-High Pressure Male-To-Male Connectors

Part No.	Connection Type		Max. Pressure	
	Connection 1 (C1)	Connection 2 (C2)	psi	bar
CM6146	1/4" HP Male	1/4" HP Male	40,000	2,800
PP19095	1/4" HP Male	9/16" HP Male	40,000	2,800
PM11143	3/8" HP Male	3/8" HP Male	40,000	2,800
PM11142	3/8" HP Male	9/16" HP Male	40,000	2,800
DM6023-176	9/16" HP Male	9/16" HP Male	40,000	2,800



Ultra-High Pressure Male-To-Female Connectors

Part No.	Connection Type		Max. Pressure	
	Connection 1 (C1)	Connection 2 (C2)	psi	bar
DM6023-178	1/4" HP Male	3/8" HP Female	40,000	2,800
PM7879	1/4" HP Male	9/16" HP Female	40,000	2,800
DM6023-163 or 3	3/8" HP Male	9/16" HP Female	40,000	2,800
DM6023-182	9/16" HP Male	1/4" HP Female	40,000	2,800
DM6023-245	9/16" HP Male	3/8" HP Female	40,000	2,800



Y-Adapters

Part No.	Connection Type	Max. Pressure	
		psi	bar
PM9342	9/16" HP Female	40,000	2,800

