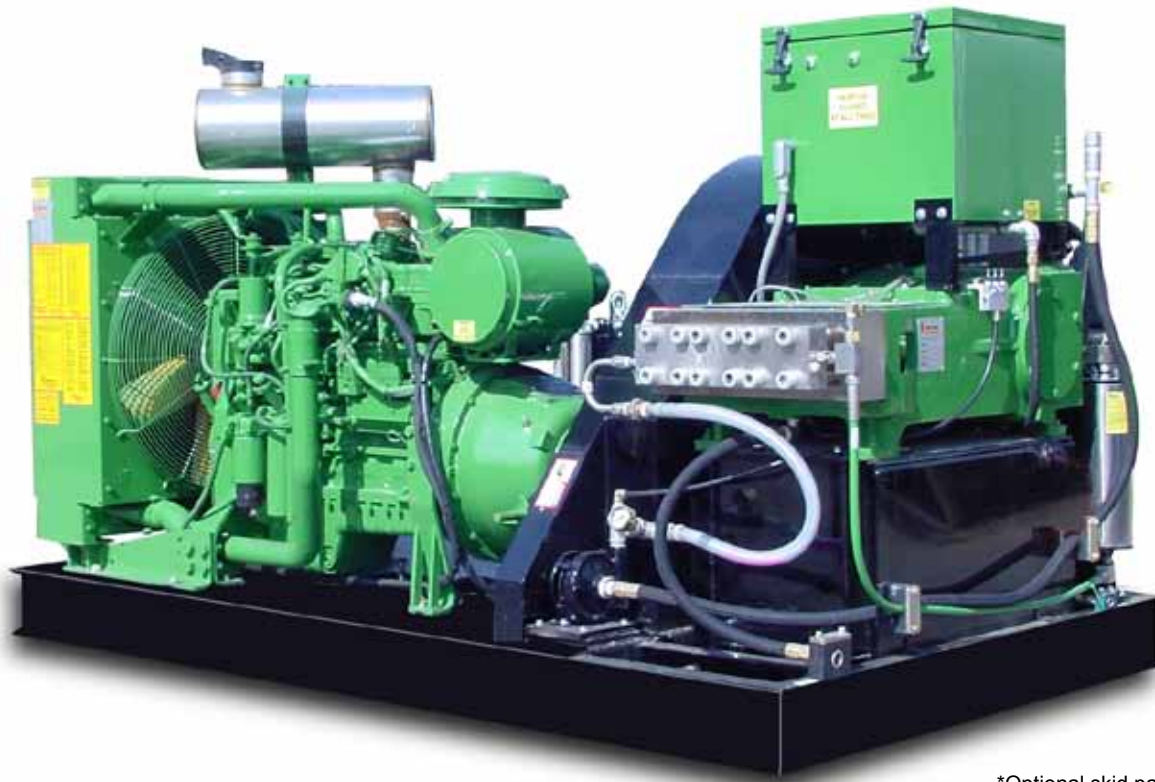


# NLB Model 35220D/40220D

## Ultra-High Pressure Water Jetting System



\*Optional skid package shown.

The NLB Ultra-Clean® Water Jet Systems combine the power of UHP waterblasting with the dependability of a slow-running plunger pump design that has been proven in countless applications for over 40 years.

With pressures up to 40,000 psi (2,800 bar) and a flow rate of 10 gpm (38 lpm), the Ultra-Clean has the flexibility to perform a wide variety of water jetting applications, and allows for dual operator capability. Several of most common applications include surface preparation, coating removal, and cutting. Since the unit's power comes from a slow-running triplex plunger pump, wear and maintenance are minimized. You save money on parts and have more up-time in the field.

### Features include:

- The slow running plunger pump is built from high-grade stainless steel and provides unprecedented reliability.
- Compact-skid design.
- Pump can be converted to operate at pressures of 10,000 or 20,000 psi.
- Optional on-board air compressor to power multiple accessories.
- A remote accessory manifold includes pressure gauge, rupture disc and by-pass valve.



*The Leader in High-Pressure Water Jet Technology*

# 35220D/40220D UHP Water Blaster



## Industrial Engine:

A six cylinder diesel CAT 3126B engine rated for 275 HP (205 kw) on a continuous duty basis. It includes a heavy duty clutch power take off, 12 volt electric start, fully shrouded engine (optional), exhaust muffler and battery.

Model	GPM	LPM	PSI	BAR
35220D	10	38	35,000	2,415
40220D	8.2	31	40,000	2,800

## Trailer Mount Available:

- Dual axle design
- 16.5" wheels (419 mm)
- D.O.T. lighting package
- Heavy-duty gusseted fenders
- Electric brakes
- Acrylic enamel paint

## Skid Mounting:

- Size: 74" Wide (1.88 m) x 130" Long (3.3 m) x 70" High (1.78m)
- Weight 6,500 lbs. (2,951 kg)

## Engine Driven Pumping Assembly:

- Slow running NLB Model 36200 pump
- Belt drive with guard (optional gear pac)
- 68 Gallon (257 l) fuel tank
- 60 Gallon (225 l) stainless steel water tank
- Dual water inlet filters (10 and 6 micron absolute)
- Three plunger positive lubrication
- All necessary plumbing and operating controls
- Pressure adjusting by-pass valve
- Optional on-board compressed air - 50 cfm (24.5 l/sec) or 100 cfm (49.5 l/sec).
- Oil filled pressure gauge and rupture disc assembly

**Specifications subject to change without notice**

## Optional Accessories:

- NLB NCG8450A-3 rotating cleaning lance
- SPIN JET® floor and grate cleaner
- VertaJet™



Paint removal for automotive skids using the NLB Model NCG8450A-3 rotating hand lance.



NLB's HydroPrep™ line of surface preparation tools reduce environmental impact and eliminate the need for containment.

**All Units Are Factory Tested Before Shipment**



**The Leader in High-Pressure  
Water Jet Technology**

**Headquarters**  
29830 Beck Road  
Wixom, MI 48393-2824  
(248) 624-5555  
FAX: (248) 624-0908  
<http://www.nlbcorp.com>

### Regional Offices

- 159 Harmony Road, Mickleton, NJ 08056 (856) 423-2211 FAX: (856) 423-0997
- 14302 Hwy 44 N., Gonzales, LA 70737 (225) 622-1666 FAX: (225) 622-7366
- 11506 Spencer Hwy, La Porte, TX 77571 (281) 471-7761 FAX: (281) 471-8738
- 1323 E. Hill St., Signal Hill, CA 90755 (562) 490-3277 FAX: (562) 733-0780
- 1075 Breuckman Drive, Crown Point, IN 46307 (219) 662-6800 FAX: (219) 662-1400